



Technical Administration Guide

General

This document highlights Corporate Directory software features and how to manage and configure them; in addition a brief view of technical aspects is provided. This document is targeted for IT technical staff members.

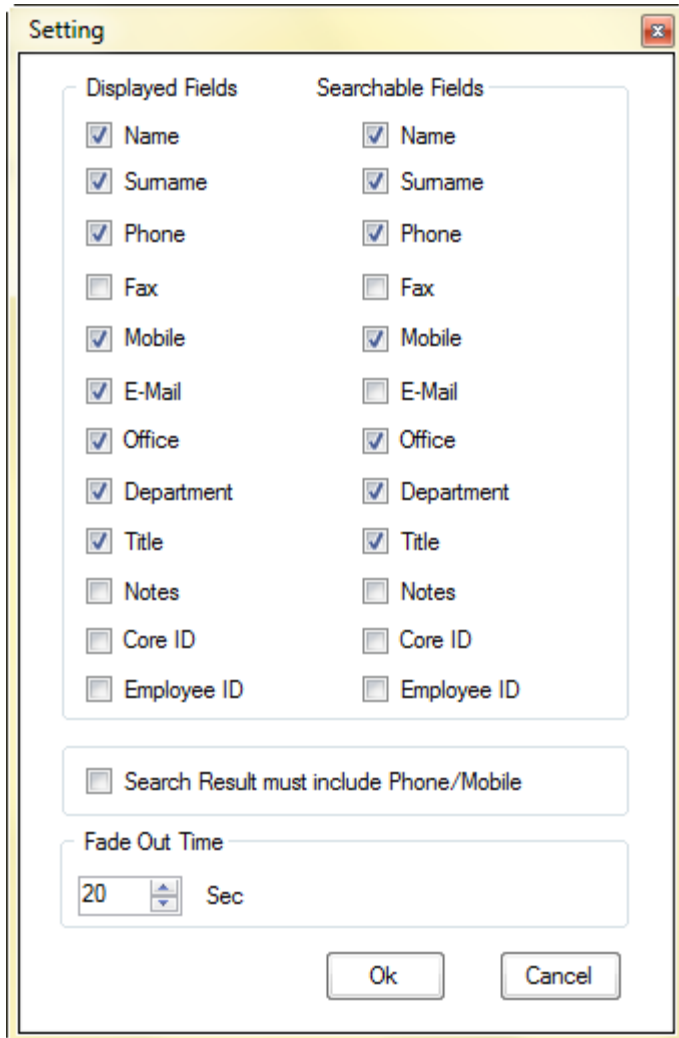
Complete Feature List of Corporate Directory

- Ultra fast search – as-you-type – by any user property (first/last name, department, title, phone number etc.)
- Reads various user properties from Microsoft Active Directory and allows ultra fast search on any of them
- Automatic background synchronization (default every 6 hours) of records in AD.
- Settings allow selecting which fields will be displayed and which are searchable. It also allows changing the fade out window time and to filter out records that have neither phone nor mobile number.
- Ability to re-arrange columns in main window using drag and drop to personalize view. Ability to sort by each column.
- Supports Windows XP, Windows 7 32 & 64 bit.
- Supports Active Directory 2003 & 2008
- Simple install – no configuration and no server required. After install the software detects the domain that the computer is member of and reads contact information of all users in that domain.
- Ability to read contact details from additional Active Directory domains.
- Cache data is stored locally encrypted to maintain data security.
- Works offline – once initially synchronized will display search results even when off line.
- User has ability to update his own personal contact details back to the Active Directory. (Depends on organization security policy) by launching update window using right mouse click on the task bar icon.
- Ability to display users photo when mouse over their name or surname (centrally configurable)
- Ability to browse to user's personal web page, such as SharePoint my site, by double clicking users name or surname (centrally configurable)
- Ability to create new mail to user by double-clicking on his email
- Ability to apply string manipulation rules on all phone numbers (office, mobile fax). This allows adding to the application view prefix, suffix or any other string manipulation. This is done without impacting data in Active Directory

Following are features that require configuration by the IT technical staff:

1 Settings window

The following is a print screen of the settings window of the application:



2 Users Photo and Personal web page

2.1 General Description

Corporate Directory provides ability to display two user related information:

2.1.1 User's Photo ([EMP_PHOTO_URL](#))

Mouse hovering on the user 'Name' or 'Surname' displays the desired photo without the need to click the mouse

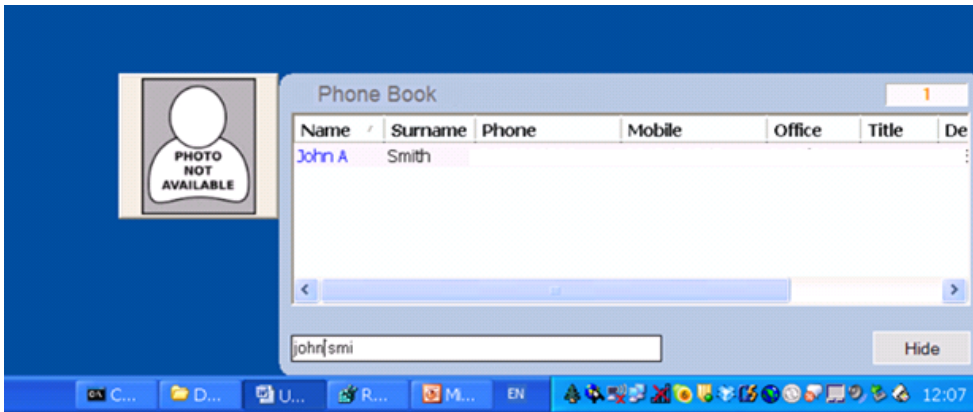


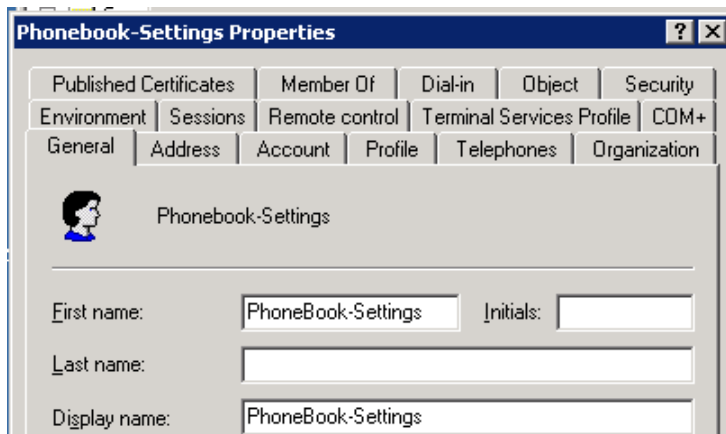
Figure 1: User Photo

2.1.2 User Personal Web Page ([EMP_SITE_URL](#))

Double clicking on the user '[Name](#)' or '[Surname](#)' launches a browser to a URL (site) associated with the selected user

How it works

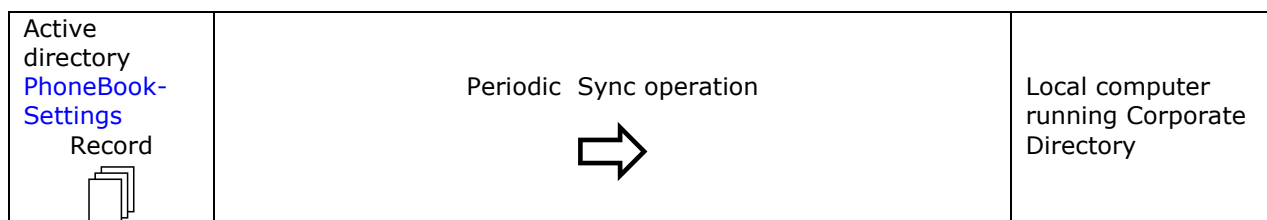
In order to provide central configuration on all installed Corporate Directory clients in the organization there is a need to create in the Active Directory a central management user object with the first name: '[PhoneBook-Settings](#)' (case sensitive);




This user can be hidden from GAL and may be disabled.

The [PhoneBook-Settings](#) record will contain in its '[Office](#)' and '[Notes](#)' fields special data patterns that instruct later the Corporate Directory clients how to fetch the user Photo ([Notes](#)) or to browse to the user personal web page ([Office](#))

During the synchronization process, when Corporate Directory retrieves data from the Active Directory and stores it in the local computer cache, the special user [PhoneBook-Settings](#) record is captured and its '[Office](#)' and '[Notes](#)' fields content is being saved in the local computer Registry as follows:



		
Record Entry name	URL/Network Path Pattern examples (See section 2.2 for details)	Registry Entry name
Notes	\\servername\sharename\...\\$*<EmployeeID>*\$\$.jpg	EMP_PHOTO_URL
Office	http://info/&Lname=\$*<LastName>*&Fname=\$*<FirstName>*\$	EMP_SITE_URL

Later, after a successful search (within the Corporate Directory), hovering the mouse on the found user **Name** or **Surname** will cause the software to read the **EMP_PHOTO_URL** pre-stored registry data, incorporate (for example) the desired **EmployeeID** (or any other user property) within the pattern, and retrieve and displays the user photo using the composed URL/network path; similarly, when the **Name** or **Surname** are double clicked the **EMP_SITE_URL** data is used to browse to the user's personal web page.

2.2 Configuring the User Photo and Site URLs / Network Path

To configure the above one should need to

- Design the desired URL/Network Path Pattern
- To update the PhoneBook Settings Active Directory user with the correct values.

2.2.1 Building the URLs Pattern

The expected URL pattern format consists of a predefined path and set of Corporate Directory **Variables**

For example, considered the users photos are located in the following network location:

\\Server-A\SharedFolder\ aaa\bbb\PhotosFolder\3721781.jpg

Where **3721781** represent the Employee ID as resides in the Active Directory

To support the above Pattern Corporate Directory expects the following format:

|-----Pattern-----|

\\Server-A\SharedFolder\ aaa\bbb\PhotosFolder\\$*<EmployeeID>*\$\$.jpg

Where

- **\$*** - Start of Pattern delimiter characters
- ***\$** - End of Pattern delimiter characters
- **<** - Start of Variable delimiter character
- **>** - End of Variable delimiter character

Note that a pattern may include only one **Variable**; still few **Patterns** may be included in one URL, either in a row or in different positions as follows:

|---Pattern1 ---| |-----Pattern2-----| |-----Pattern3-----|

\\srv\Folder\aa\bbb\\$*<Office>*\$*\$*<Department>*\$\PhotosFolder\\$*<EmployeeID>*\$\$.jpg

The following is the complete list of **Variables**:

#	Variable name
1	FirstName
2	LastName
3	Phone
4	Mobile
5	Office
6	Title
7	Manager
8	directReports
9	Department
10	Email
11	EmployeeID
12	Fax
13	Notes
14	CoreID

Note: Variable format is case sensitive and they should be typed exactly as appeared in the above table

2.2.2 Updating Active Directory with the desired URL Patterns

As mentioned above applying the desired URL Patterns for the user 'Photo' and 'Site' is the customer role (typically the customer company System admin).

This section describes how to create a new user in the Active directory called first name: [PhoneBook-Settings](#); to update two entries 'Office' and 'Notes' with the desired URLs Patterns as described in section 2.2.1

To create a central configuration that will reside in the Active Directory follow these steps:

Step1: Create a new user in the Active Directory with the first name: [PhoneBook-Settings](#)
This user may be hidden from GAL and can be disabled.

Step2: Within the [PhoneBook-Settings](#) locate the [Notes](#) entry ('General tab=>Notes') and update it with the desired Photo URL Pattern

Step3: Within the [PhoneBook-Settings](#) locate the [Office](#) entry ('General tab=>Office') and update it with the desired personal web page URL Pattern